

# Iridium GO!™

## Wall Mounting Instruction Guide





Prior to using Iridium GO!, read and understand the User Manual including the safety warnings and information. Failure to do so could result in serious injury or death.

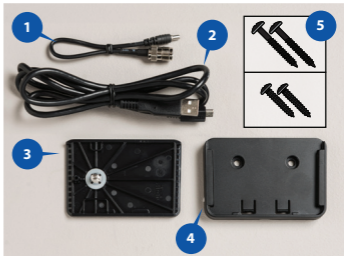
**Iridium GO! can be installed indoors using the Wall Mounting Kit and an external antenna accessory, providing flexibility in use.**

**The Wall Mounting Kit consists of two separate parts which allow you to use your Iridium GO! in a fixed indoor location or to easily remove it for portable use outdoors.**

**To configure your Iridium GO! for wall mounting, follow these instructions to attach the Mounting Plate and install the Wall Bracket with the correct hardware.**

## To install the wall mounting kit, you will need:

1. Antenna Adapter Cable (sold separately)
2. USB 2.0 cable with micro & standard USB connectors
3. Mounting Plate
4. Wall Bracket
5. Screws (2 wood or 2 metal)



## STEP 1: Mounting Plate

A:



Attach the Mounting Plate by aligning the screw and locating pin to the back of the Iridium GO! device.

**B:**



Once aligned, tighten the mounting screw to ensure a secure fit.

## **STEP 2:** Wall Bracket Placement

The Wall Bracket should be located in close proximity to the cable for your exterior antenna and to a power source to charge the device. Additionally, it is recommended that the bracket is located in places that allow minimal obstruction for the Iridium GO! application users, keeping in mind that walls, doors and other structure may negatively impact the Wi-Fi range of the device.

**(Continued on reverse)**

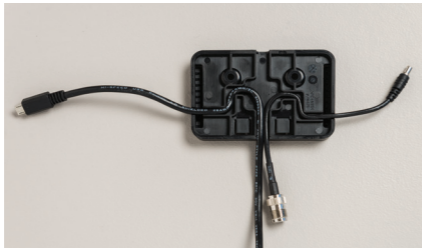
**A:**



Select the appropriate screws (wood or metal) for the material of the wall.

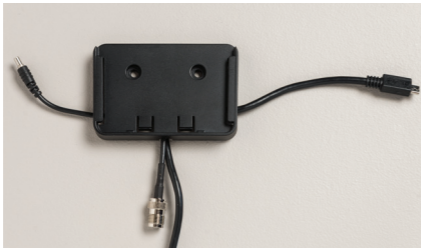


**B:**



Route the USB cable and Antenna Adapter Cable through the guides in the rear of the Wall Bracket as shown above. Extend approximately 10 cm (4 in) of each cable on both sides of the bracket to allow connection to the Iridium GO! device.

C:



Attach the bracket to the wall.

D:



Slide Iridium GO! onto the Wall Bracket.

E:



Open the access doors and connect the USB and antenna cables.

**NOTE:** The Wall Bracket is also compatible with RAM Mounts® for placement on windows and in other locations.



YOUR LIFE. YOUR DEVICES. CONNECTED. **EVERYWHERE.**

©Copyright 2014 Iridium Satellite LLC and its affiliates. All rights reserved.

Iridium® and the Iridium Logo are registered trademarks, and Iridium GO!™ is a trademark of Iridium Satellite LLC and its affiliates ("Iridium"). All other trademarks, service marks and logos are the property of their respective holders, which have not endorsed, sponsored or otherwise affiliated with Iridium or Iridium GO!.

07/14

WBKT1301